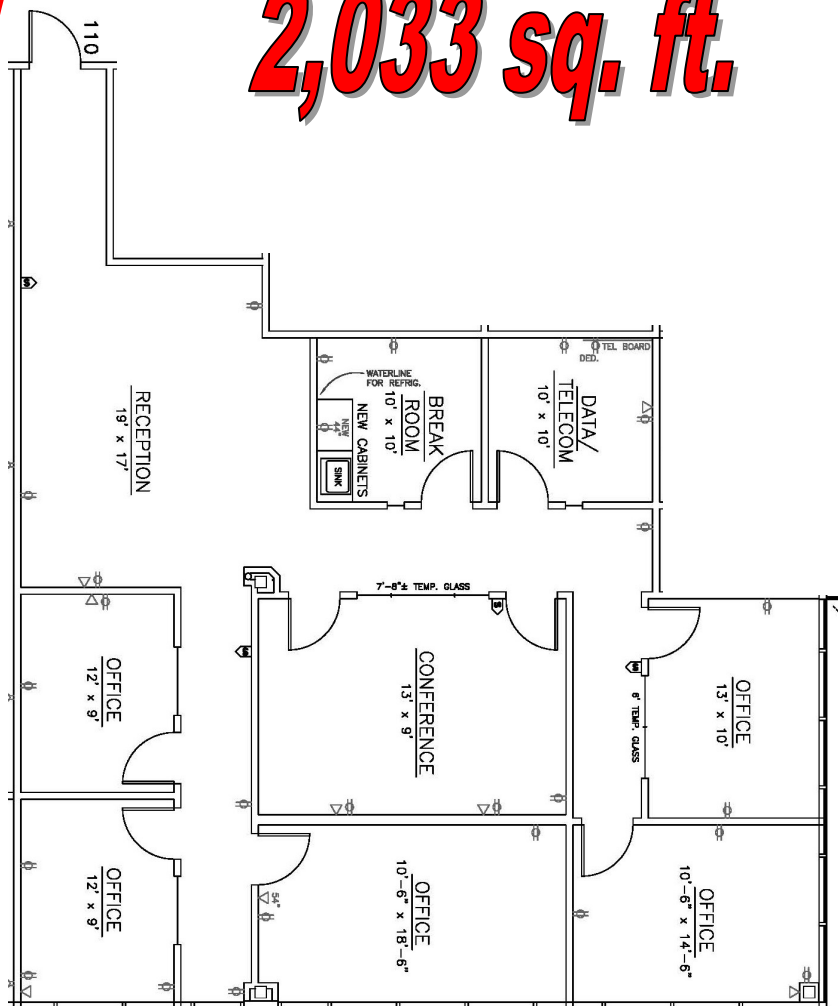




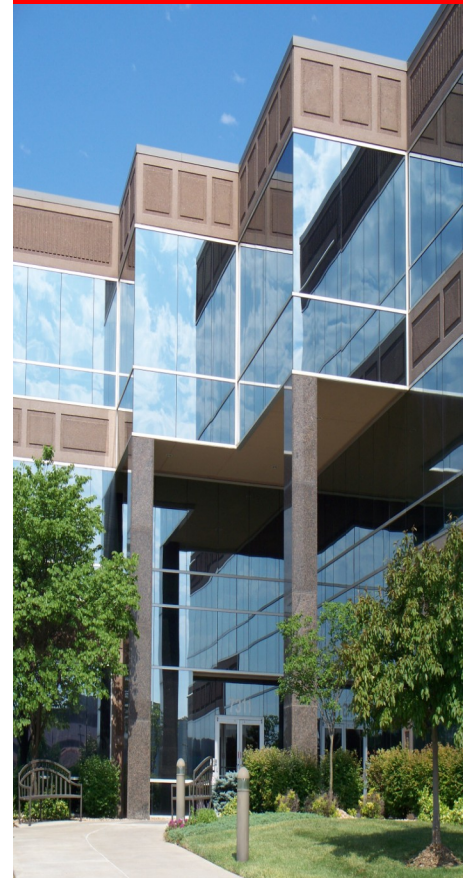
Building XIIB—7400 W. 132nd St.

2,033 sq. ft.



- * On-site leasing, management & ownership
- * Cost-effective building designs
- * Professional floor plan development
- * Custom interior design services
- * General contracting by Southcreek
- * Flexible expansion options
- * Convenient parking
- * Excellent location
- * Beautiful park settings
- * Commitment to your needs

1st Floor Suite
Spec Space—Ready
for Carpet & Paint
Offices on Glass
On-Site
Management



Elaine Sicht
Kathy Woodward, SIOR
DDI COMMERCIAL, INC.
 7200 West 132nd Street
 Suite 300
 Overland Park, KS 66213
 P: 913.685.4100
 F: 913.685.1232

Elaine@DDIRealty.com
KathyW@DDIRealty.com
DDICommercial@DDIRealty.com
www.SouthcreekOfficePark.com