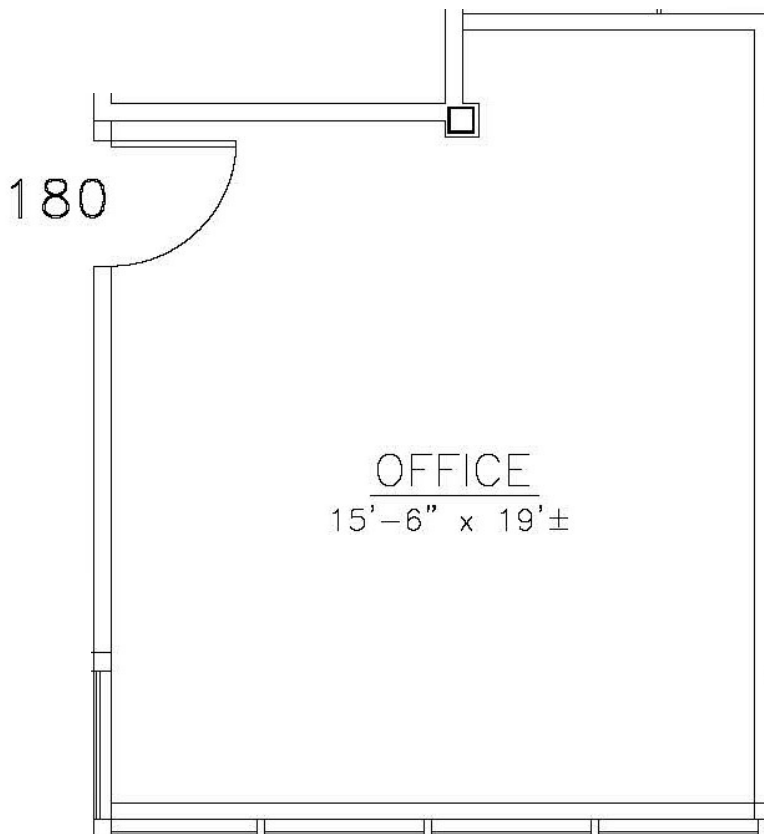




**Building III—7201 W. 129th St.**

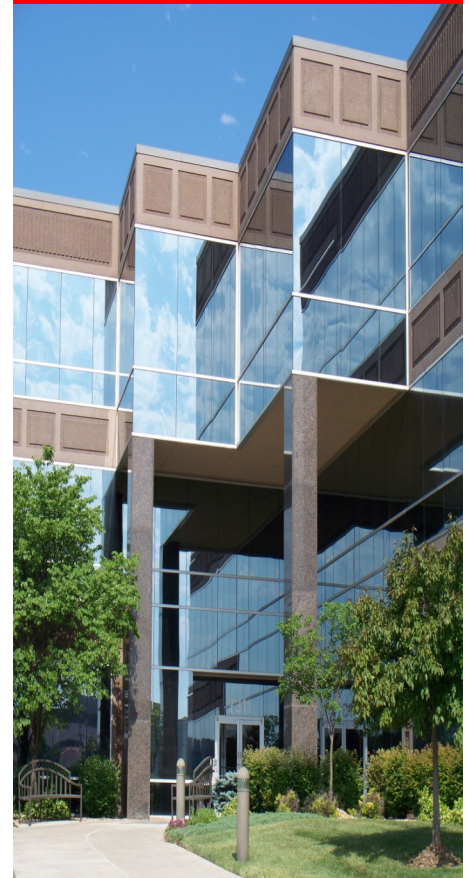
***315 sq. ft.***



**Available Mid-May  
Terrific Small Suite  
on 1st Floor**

**Move-In Ready**

**Easy Access to  
Major Highways**



***Elaine Sicht  
Kathy Woodward, SIOR***  
**DDI COMMERCIAL, INC.**

7200 West 132nd Street  
Suite 300

Overland Park, KS 66213

P: 913.685.4100

F: 913.685.1232

**[Elaine@DDIRealty.com](mailto:Elaine@DDIRealty.com)**

**[KathyW@DDIRealty.com](mailto:KathyW@DDIRealty.com)**

**[DDICommercial@DDIRealty.com](mailto:DDICommercial@DDIRealty.com)**

**[www.SouthcreekOfficePark.com](http://www.SouthcreekOfficePark.com)**

- \* On-site leasing, management & ownership
- \* Cost-effective building designs
- \* Professional floor plan development
- \* Custom interior design services
- \* General contracting by Southcreek
- \* Flexible expansion options
- \* Convenient parking
- \* Excellent location
- \* Beautiful park settings
- \* Commitment to your needs