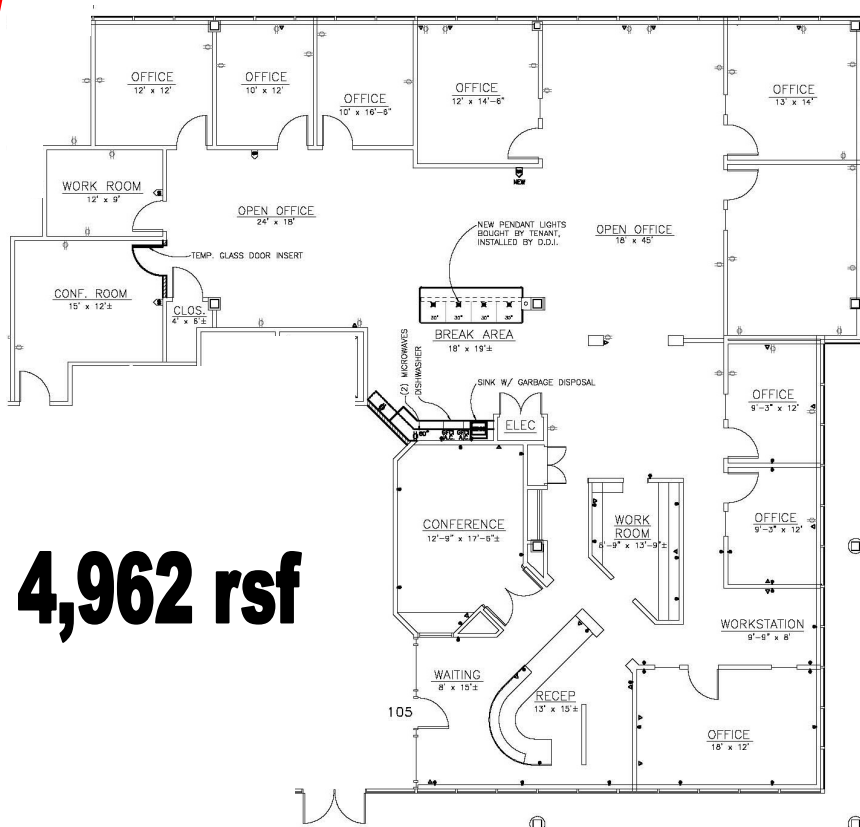




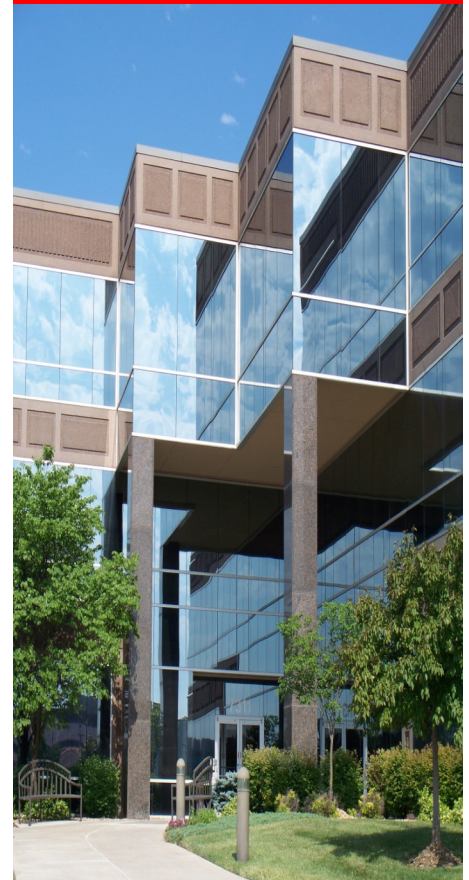
**Building III—7201 W. 129th St.**



**4,962 rsf**

- \* On-site leasing, management & ownership
- \* Cost-effective building designs
- \* Professional floor plan development
- \* Custom interior design services
- \* General contracting by Southcreek
- \* Flexible expansion options
- \* Convenient parking
- \* Excellent location
- \* Beautiful park settings
- \* Commitment to your needs

**Available 12/2018**  
**Great 1st Floor**  
**Corner Suite**  
**Fantastic Break**  
**Area**



*Elaine Sicht*  
*Kathy Woodward, SIOR*  
**DDI COMMERCIAL, INC.**  
 7200 West 132nd Street  
 Suite 300  
 Overland Park, KS 66213  
 P: 913.685.4100  
 F: 913.685.1232

[Elaine@DDIRealty.com](mailto:Elaine@DDIRealty.com)  
[KathyW@DDIRealty.com](mailto:KathyW@DDIRealty.com)  
[DDICommercial@DDIRealty.com](mailto:DDICommercial@DDIRealty.com)  
[www.SouthcreekOfficePark.com](http://www.SouthcreekOfficePark.com)