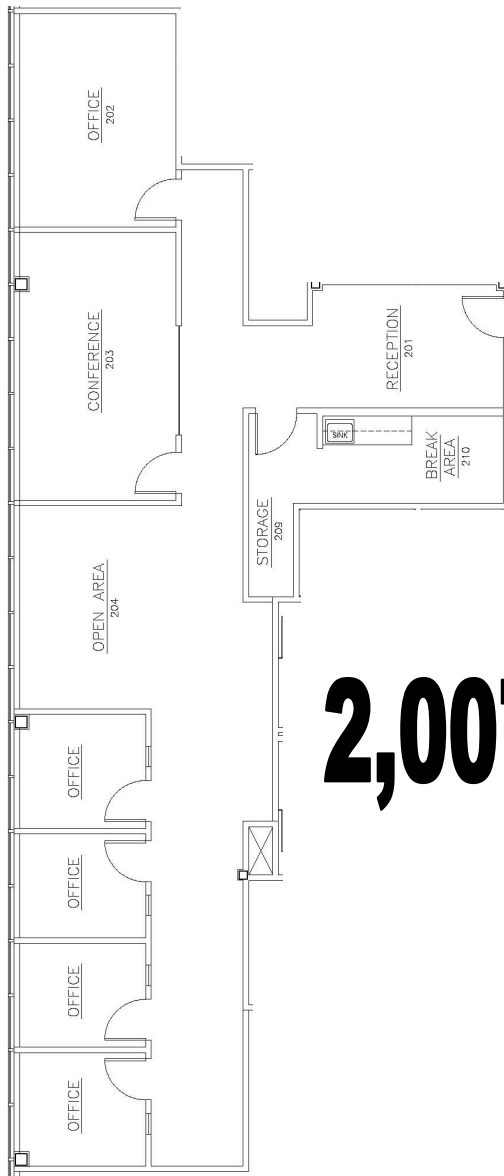


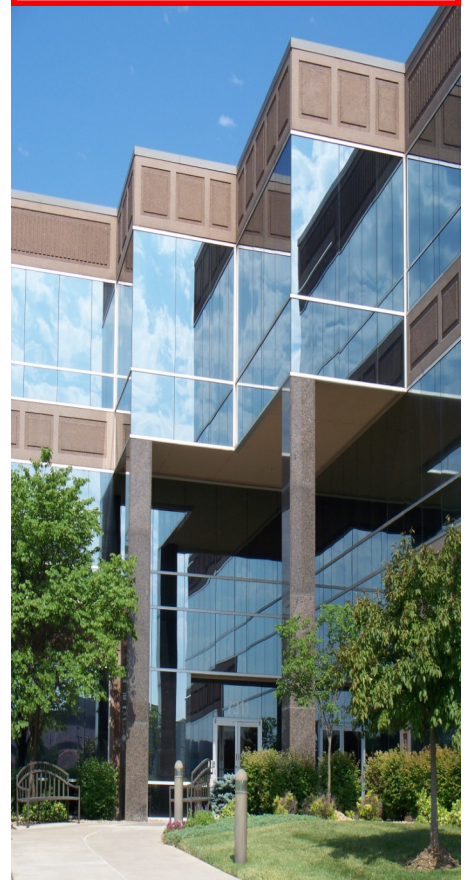


Building IVa—7301 W. 129th St.



2,007 RSF

**New to Market
Offices on Glass
Next to Lake &
Walking Trail
On-Site
Management**



- * On-site leasing, management & ownership
- * Cost-effective building designs
- * Professional floor plan development
- * Custom interior design services
- * General contracting by Southcreek
- * Flexible expansion options
- * Convenient parking
- * Excellent location
- * Beautiful park settings
- * Commitment to your needs

*Elaine Sicht
Kathy Woodward, SIOR*
DDI COMMERCIAL, INC.

7200 West 132nd Street
Suite 300
Overland Park, KS 66213
P: 913.685.4100
F: 913.685.1232

Elaine@DDIRealty.com
KathyW@DDIRealty.com
DDICommercial@DDIRealty.com
www.SouthcreekOfficePark.com