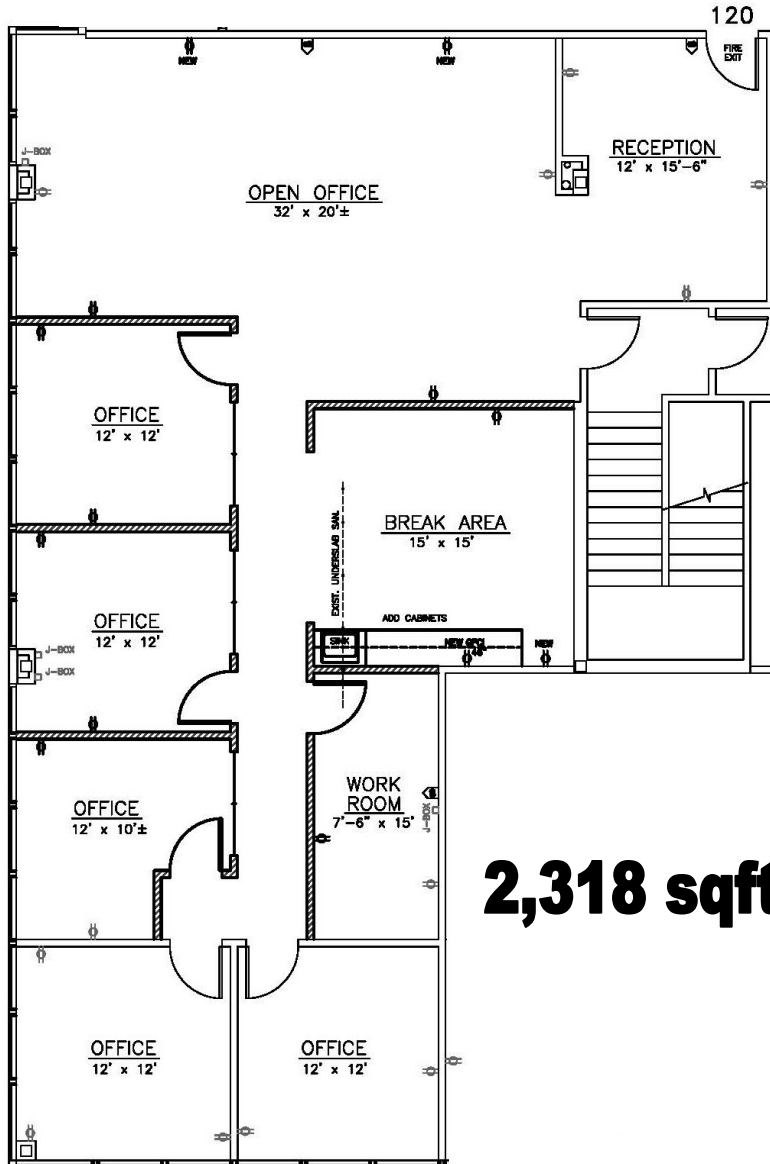
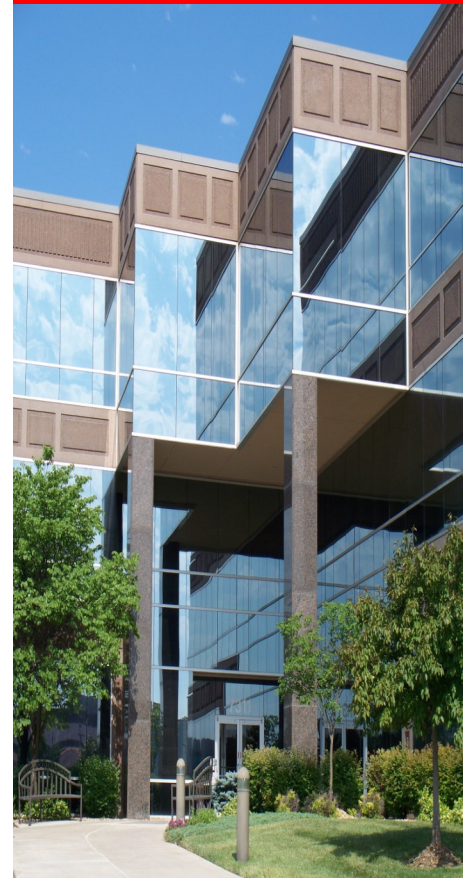


**Building XVI 7311 W. 132nd St.**



**2,318 sqft**

**3 Sides of Glass**  
**Nice Mix of Office**  
**and Open Area**  
**Entrance on**  
**Elevator Lobby**  
**Close to Amenities**



- \* On-site leasing, management & ownership
- \* Cost-effective building designs
- \* Professional floor plan development
- \* Custom interior design services
- \* General contracting by Southcreek
- \* Flexible expansion options
- \* Convenient parking
- \* Excellent location
- \* Beautiful park settings
- \* Commitment to your needs

*Elaine Sicht*  
*Kathy Woodward, SIOR*  
**DDI COMMERCIAL, INC.**

7200 West 132nd Street  
 Suite 300  
 Overland Park, KS 66213  
 P: 913.685.4100  
 F: 913.685.1232

[Elaine@DDIRealty.com](mailto:Elaine@DDIRealty.com)  
[KathyW@DDIRealty.com](mailto:KathyW@DDIRealty.com)  
[DDICommercial@DDIRealty.com](mailto:DDICommercial@DDIRealty.com)  
[www.SouthcreekOfficePark.com](http://www.SouthcreekOfficePark.com)