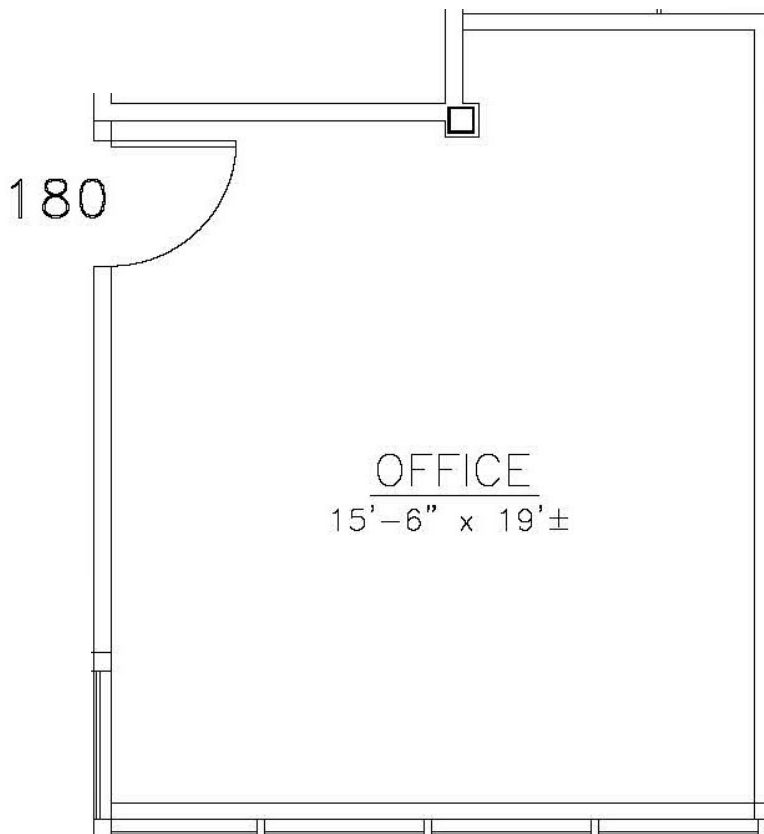




Building III—7201 W. 129th St.

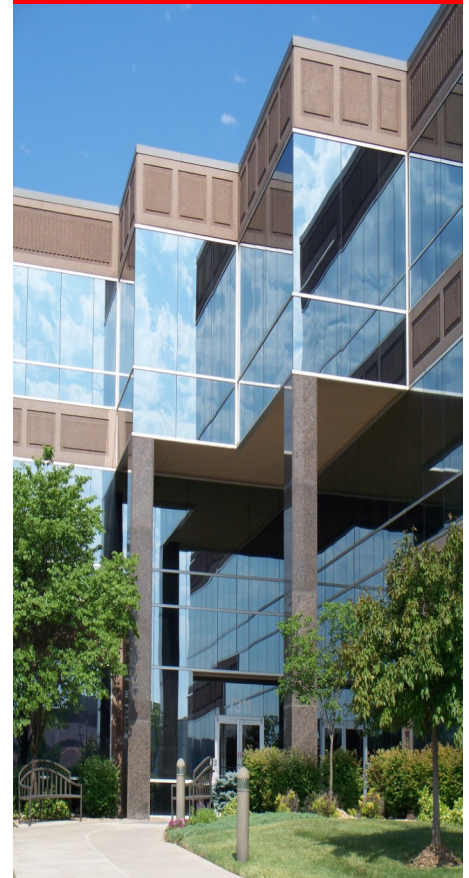
315 sq. ft.



**Available August
Terrific Small Suite
on 1st Floor**

Move-In Ready

**Easy Access to
Major Highways**



*Elaine Sicht
Kathy Woodward, SIOR*
DDI COMMERCIAL, INC.

7200 West 132nd Street
Suite 300

Overland Park, KS 66213

P: 913.685.4100

F: 913.685.1232

Elaine@DDIRealty.com

KathyW@DDIRealty.com

DDICommercial@DDIRealty.com

www.SouthcreekOfficePark.com

- * On-site leasing, management & ownership
- * Cost-effective building designs
- * Professional floor plan development
- * Custom interior design services
- * General contracting by Southcreek
- * Flexible expansion options
- * Convenient parking
- * Excellent location
- * Beautiful park settings
- * Commitment to your needs