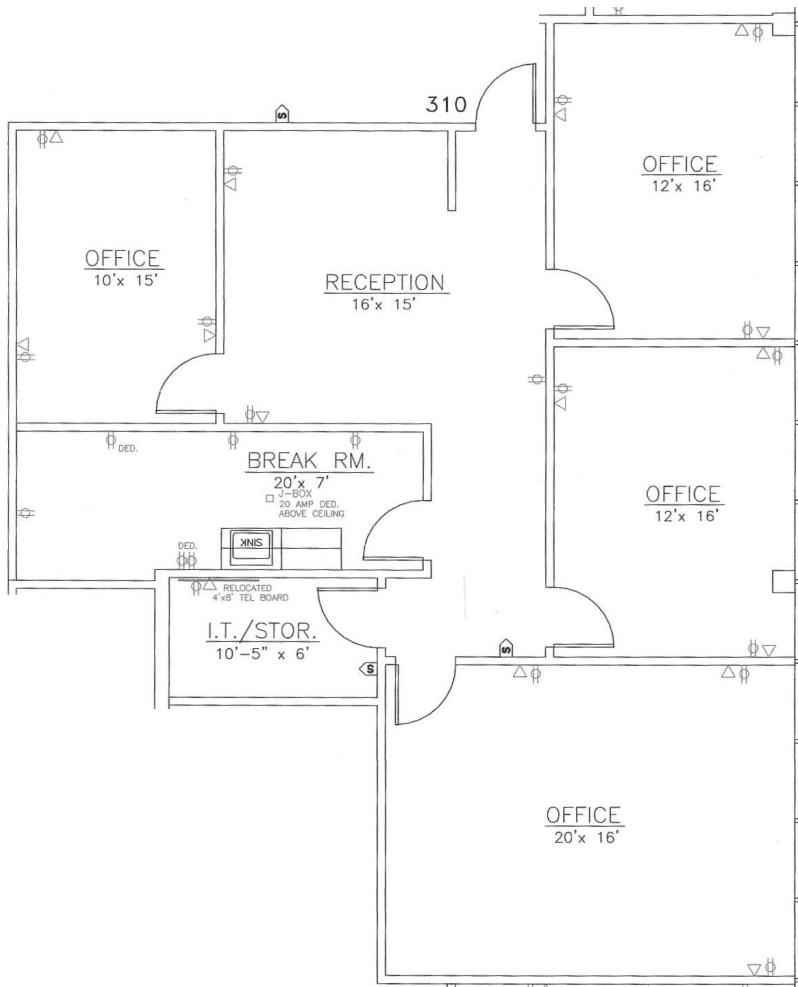


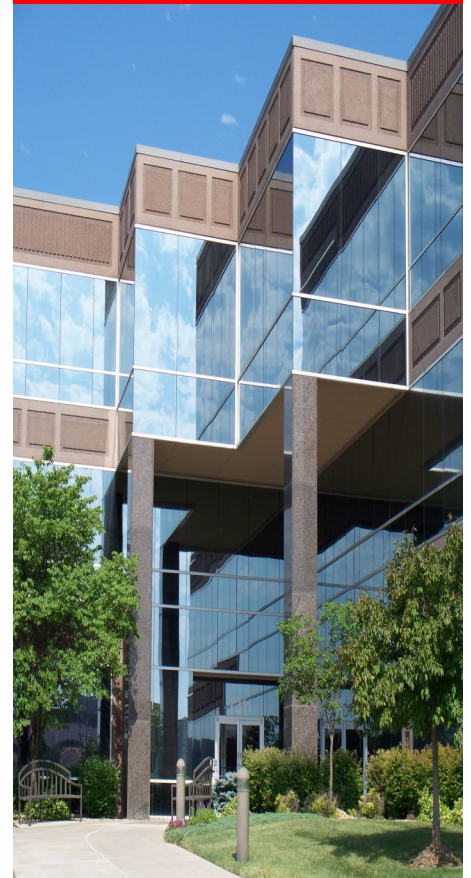


**Building XIV—13220 Metcalf**

**1,613 sq. ft.**



**Available Now**  
**Great Space with**  
**Golf Course Views!**  
**On-Site Property**  
**Management**



**Elaine Sicht**  
**Kathy Woodward, SIOR**  
**DDI COMMERCIAL, INC.**  
7200 West 132nd Street  
Suite 300  
Overland Park, KS 66213  
P: 913.685.4100  
F: 913.685.1232

**[Elaine@DDIRealty.com](mailto:Elaine@DDIRealty.com)**  
**[KathyW@DDIRealty.com](mailto:KathyW@DDIRealty.com)**  
**[DDICommercial@DDIRealty.com](mailto:DDICommercial@DDIRealty.com)**  
**[www.SouthcreekOfficePark.com](http://www.SouthcreekOfficePark.com)**

- \* On-site leasing, management & ownership
- \* Cost-effective building designs
- \* Professional floor plan development
- \* Custom interior design services
- \* General contracting by Southcreek
- \* Flexible expansion options
- \* Convenient parking
- \* Excellent location
- \* Beautiful park settings
- \* Commitment to your needs