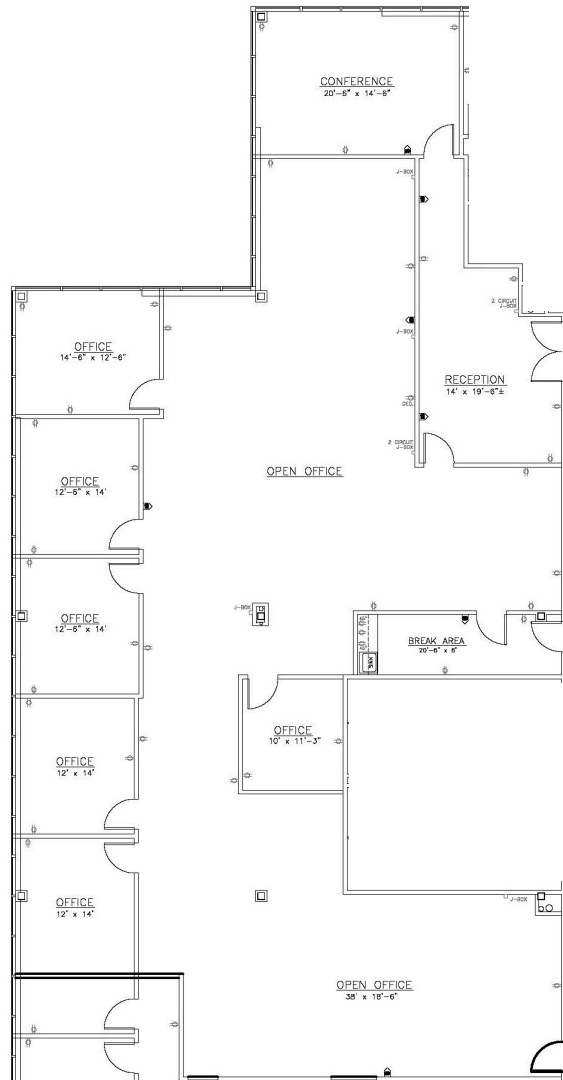




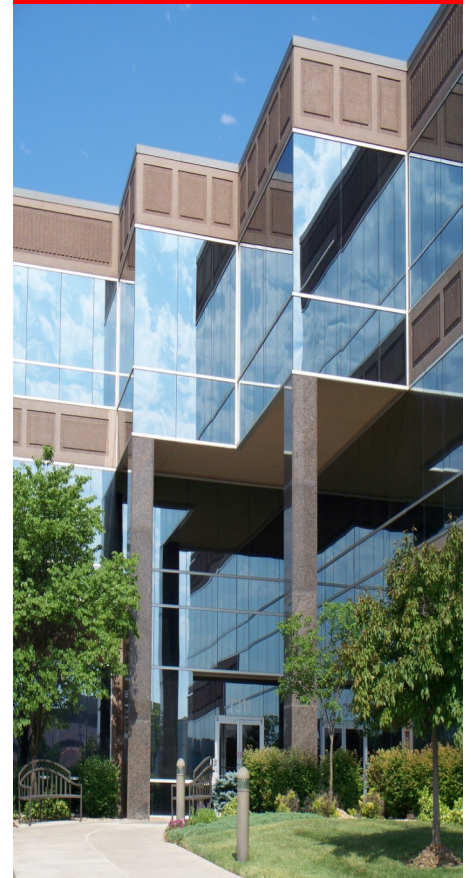
**Building X11A 7200 W. 132nd St.**

***4,794 sq. ft.***



- \* On-site leasing, management & ownership
- \* Cost-effective building designs
- \* Professional floor plan development
- \* Custom interior design services
- \* General contracting by Southcreek
- \* Flexible expansion options
- \* Convenient parking
- \* Excellent location
- \* Beautiful park settings
- \* Commitment to your needs

**New to Market**  
**Great Location Close**  
**to Amenities**  
**Open Spaces**  
**Perimeter Offices**  
**On-Site**  
**Management**



***Elaine Sicht***  
***Kathy Woodward, SIOR***  
**DDI COMMERCIAL, INC.**  
 7200 West 132nd Street  
 Suite 300  
 Overland Park, KS 66213  
 P: 913.685.4100  
 F: 913.685.1232

**[Elaine@DDIRealty.com](mailto:Elaine@DDIRealty.com)**  
**[KathyW@DDIRealty.com](mailto:KathyW@DDIRealty.com)**  
**[DDICommercial@DDIRealty.com](mailto:DDICommercial@DDIRealty.com)**  
**[www.SouthcreekOfficePark.com](http://www.SouthcreekOfficePark.com)**