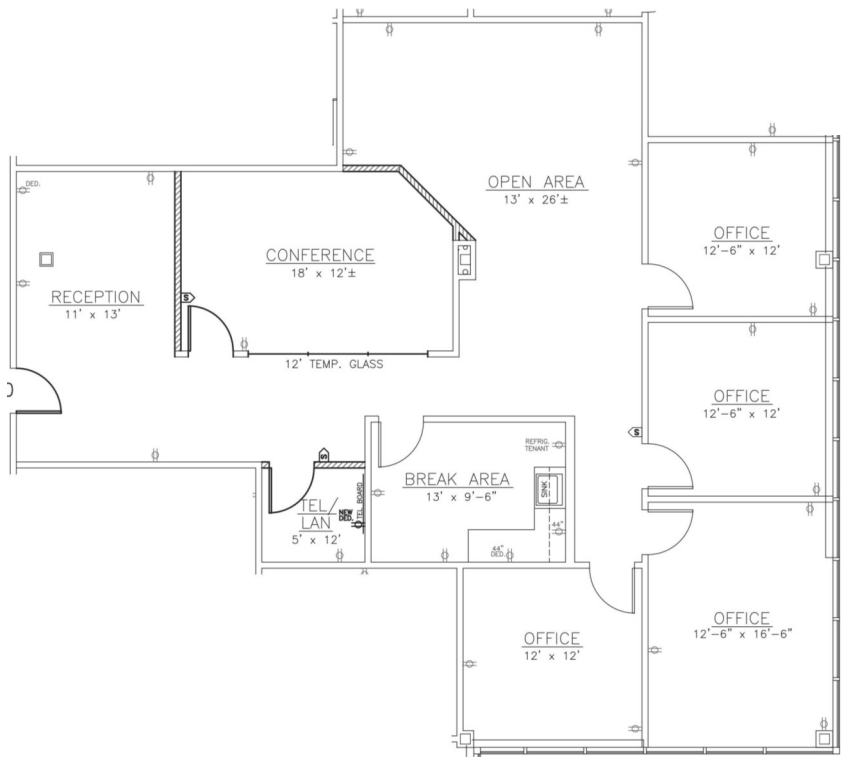




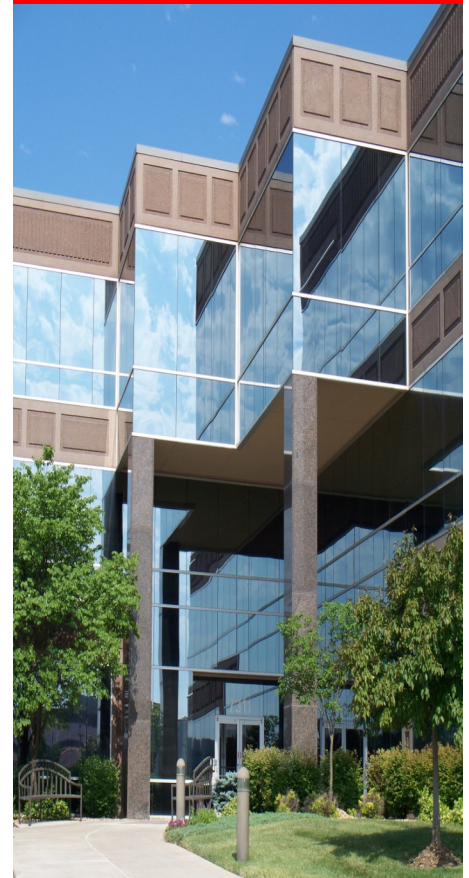
Building XIIB—7400 W. 132nd St.

2,103 sq. ft.



- * On-site leasing, management & ownership
- * Cost-effective building designs
- * Professional floor plan development
- * Custom interior design services
- * General contracting by Southcreek
- * Flexible expansion options
- * Convenient parking
- * Excellent location
- * Beautiful park settings
- * Commitment to your needs

**Available Now!
Move-In Ready
Offices on Glass
On-Site
Management**



**Elaine Sicht
Kathy Woodward, SIOR
DDI COMMERCIAL, INC.**

7200 West 132nd Street
Suite 300
Overland Park, KS 66213
P: 913.685.4100
F: 913.685.1232

Elaine@DDIRealty.com
KathyW@DDIRealty.com
DDICommercial@DDIRealty.com
www.SouthcreekOfficePark.com