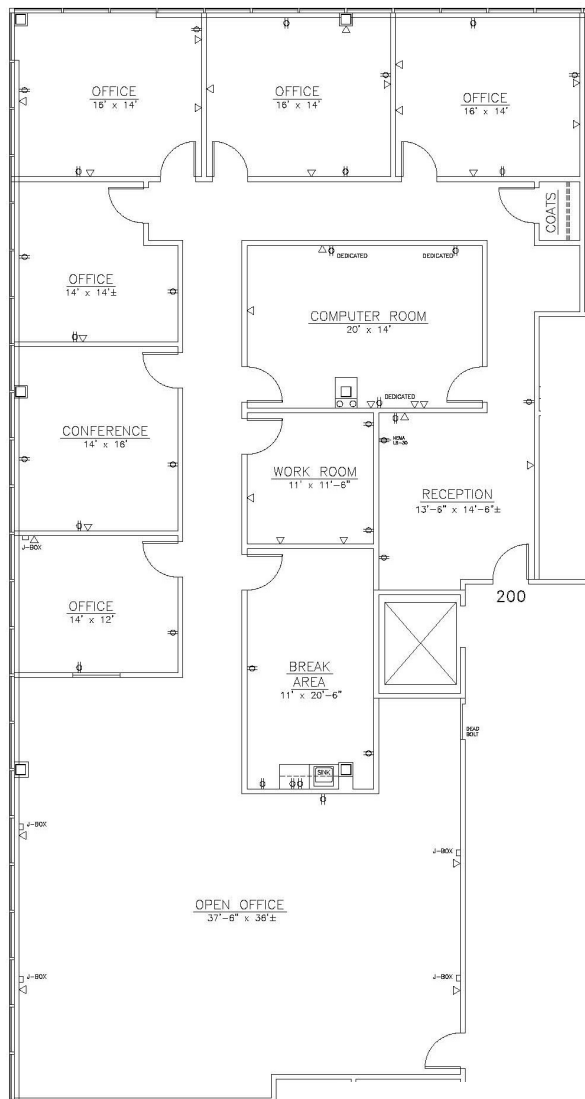
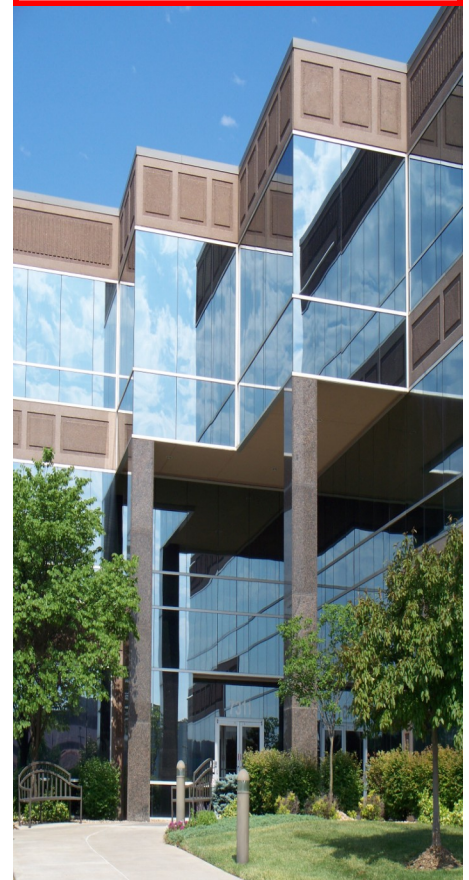


Building IVb—7304 W. 130th St.

4,283 sq. ft.



Available Now
Offices and Open
Area on Glass
Overlooks the Lake
Easy Access to
Major Highways



Elaine Sicht
Kathy Woodward, SIOR
DDI COMMERCIAL, INC.
 7200 West 132nd Street
 Suite 300
 Overland Park, KS 66213
 P: 913.685.4100
 F: 913.685.1232

Elaine@DDIRealty.com
KathyW@DDIRealty.com
DDICommercial@DDIRealty.com
www.SouthcreekOfficePark.com

- * On-site leasing, management & ownership
- * Cost-effective building designs
- * Professional floor plan development
- * Custom interior design services
- * General contracting by Southcreek
- * Flexible expansion options
- * Convenient parking
- * Excellent location
- * Beautiful park settings
- * Commitment to your needs